



SpecFAB® Custom Uni-Wall®





Uni-Wall® Construction

Eagle's proven Uni-Wall® concept allows the specifier or designer to layout counters, serving lines and bars that are custom built to NSF standards with factory pre-plumbed and/or U.L. Listed wiring options. Complete with industry leading 12 gauge galvanized Uni-Wall® stud framing assembly with utility and beverage line chase.

The chase is accessible through standard lift-off front access panels. Available in random lengths, straight or with a radius.

- ✓ sports facilities
- ✓ cafeterias
- ✓ food courts
- ✓ theaters
- ✓ casinos



Armand Larive Middle School, Oregon



Installation is reduced, compared to conventional 'built on-site counters'.

Each section of the Uni-Wall® is skidded before it is shipped from the factory. Each unit arrives with the necessary electrical lines run, plumbing in place and the beverage chase accessible and ready for immediate placement and hook-up when specified.



Fox Meadows Middle School -Colorado Springs CO



McCarthy Athletic Center - Gonzaga University, Spokane, WA

quotes@eaglegrp.com

Profit from the Eagle Advantage®



National casual dining facility chose to install custom front panels on-site for this application.

Top and fronts are offered in many finishes: stainless steel, plastic laminate of your choice, a variety of Corian® decorative patterns, or elegant hardwood tones.

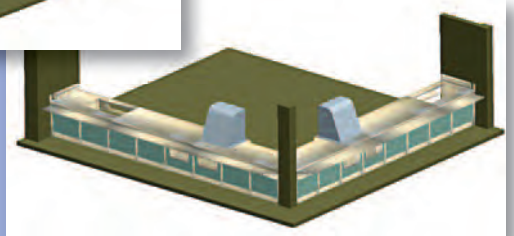
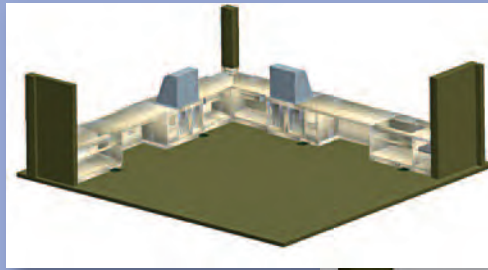


Ft. Riley, KS

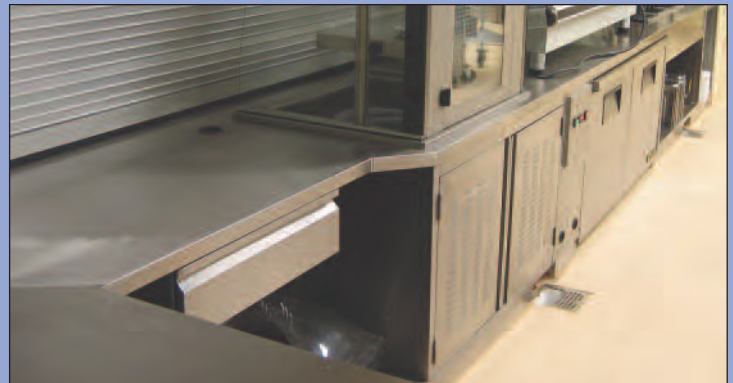


Pro/ENGINEER Wildfire

Utilizing parametric principles, this software enables Eagle to speed up the design process and incorporate the highest degree of quality control into both design and production.



*Aloha High School
Beaverton, OR*



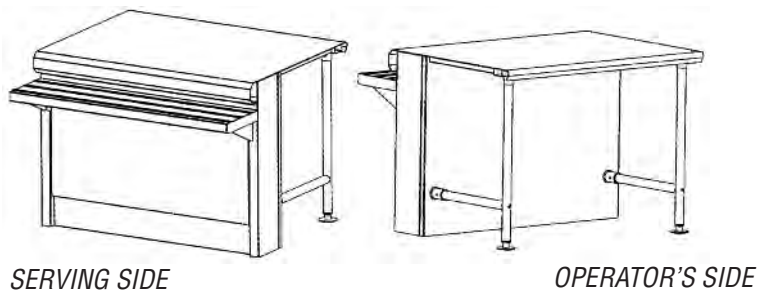
The heart of the Uni-Wall® system is a strong metal stud wall with horizontal utility chase openings for beverage, plumbing and electrical lines - all easily accessible through removeable front panels.



100 Industrial Blvd., Clayton, DE 19938-8903 U.S.A. • Main Office: (302) 653-3000 • Fax: (302) 653-2065
Phone: (800) 441-8440 • Visit us at: <http://www.eaglegrp.com>

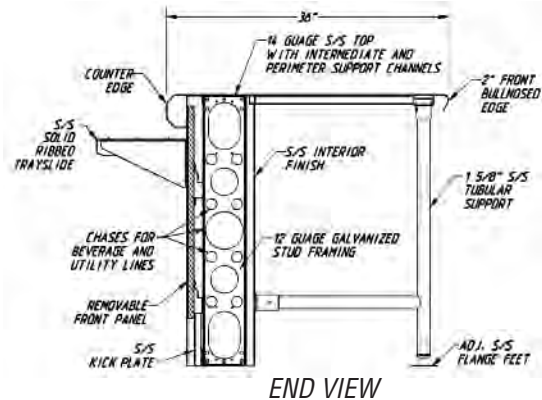
Uni-Wall®

Tubular Rear Support Configuration

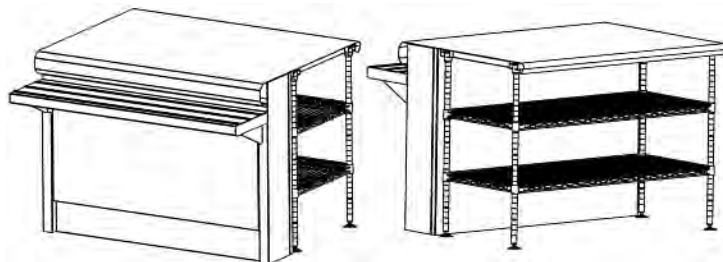


Typical material construction where available:

- Studs and interior wall 12-gauge galvanized construction
- Tops typically 14 gauge type 300 stainless steel
- Front panels feature laminate over plywood
- Stainless steel kick plates
- Tubular legs standard type 300 stainless steel with stainless steel flanged feet
- Tray slides come fixed and feature solid ribbed 16 gauge type 300 stainless steel



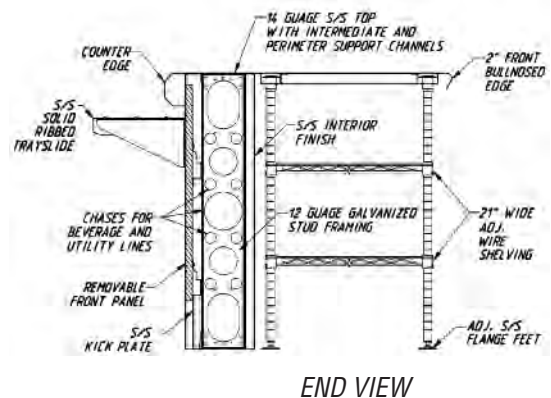
Wire Shelving Rear Support Configuration



SERVING SIDE

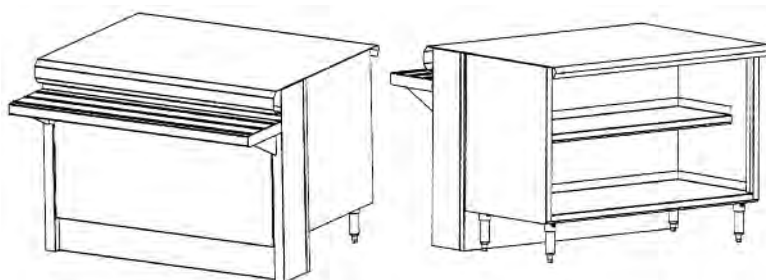
OPERATOR'S SIDE

- Shelving is chrome-plated, other finishes available



END VIEW

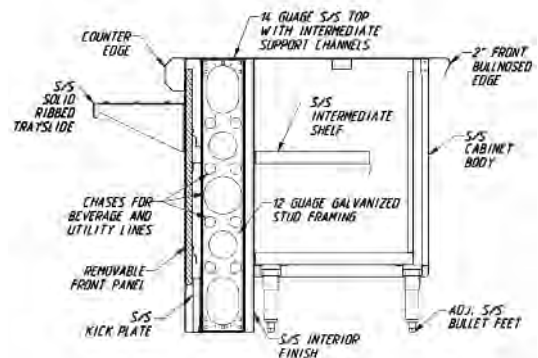
Cabinet Rear Support Configuration – Open Base



SERVING SIDE

OPERATOR'S SIDE

- Cabinet body features 18 gauge type 430 stainless steel



END VIEW