



Profit from the Eagle Advantage®

# Specification Sheet

## Short Form Specifications

Eagle Panco® Roll-In Refrigerator Rack, stainless steel model \_\_\_\_\_ . Frame, cross supports, top and bottom constructed of 1" square stainless steel tubing. Bottom is 14/304 die-formed stainless steel dolly frame. 1 1/8" x 1 1/8" extruded aluminum tray slides with raised beads to minimize friction. Slide spacing to be 2 1/4", 3", or 5" to accommodate (24, 18, 11, or 36) trays. Furnished with 5"-diameter casters. Shipped assembled. Note: Model #UARR-64-SR comes with 11 universal angle slides, each holding two 12" x 20" pans.



roll-in refrigerator rack

## Options / Accessories

- Casters with locking brakes
- Pan stops
- Vertical corner bumpers

## EAGLE GROUP

100 Industrial Boulevard, Clayton, DE 19938-8903 USA

Phone: 302-653-3000 • Fax: 302-653-2065

www.eaglegrp.com

Foodservice Division: Phone 800-441-8440

MHC/Retail Display Divisions: Phone 800-637-5100

For custom configuration or fabrication needs, contact our SpecFAB® Division.

Phone: 302-653-3000 • Fax: 302-653-3091 • e-mail: specfab@eaglegrp.com

Item No.:	_____
Project No.:	_____
S.I.S. No.:	_____

# Panco® Roll-In Refrigerator Racks —Stainless Steel Models

## MODELS:

- OURR-1824-2-SR     OURR-1811-5-SR     UARR-64-SR
- OURR-1818-3-SR     OURR-2036-3-SR

## Features on all models

- Features include dolly frame with recessed plate casters.
- Units fit specifications of most refrigerator manufacturers, including Hobart, Traulson, Victory and McCall.
- Stainless steel construction.
- Shipped assembled.

## Features on "OURR" models

- Frame and cross supports: 1" (25mm) square with heavy gauge wall stainless tubing.
- Tray slides: 1 1/8" high x 1 1/8" lip (37 x 48mm) with raised beads to prevent friction. Slides are riveted to frame.
- Top and bottom: Top is 1" (25mm) square with heavy gauge wall stainless tubing. Bottom is 14 gauge type 304 die-formed stainless steel dolly frame.
- Casters (installed): 5" (127mm)-diameter NSF-approved, non-marking rubber tired wheels on swivel plate casters.

## Features on #UARR-64-SR

- Frame and cross supports: 14 and 16 gauge type 304 die-formed stainless steel.
- Tray slides: Standard extruded aluminum universal slides adjustable on 2 1/2" (64mm) vertical centers.
- Top and bottom: Top is 1" (25mm) square tubing and 16 gauge type 304 die-formed stainless steel. Bottom is 14 gauge type 304 die-formed stainless steel dolly frame.
- Casters (installed): 5" (127mm)-diameter NSF-approved, non-marking rubber tired wheels on swivel plate casters.

## Certifications / Approvals



EG60.13B Rev. 08/08

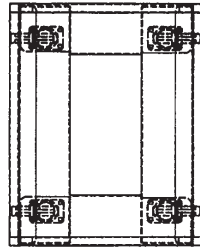
Spec sheets available for viewing, printing or downloading from our online literature library at [www.eaglegrp.com](http://www.eaglegrp.com)

Eagle Foodservice Equipment, Eagle MHC, SpecFAB®, and Retail Display are divisions of Eagle Group. ©2008 by the Eagle Group

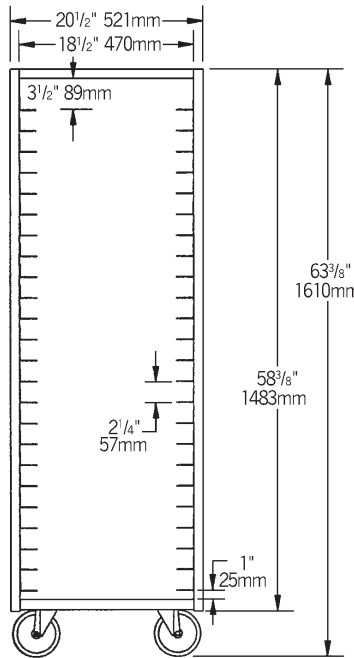


Item No.: \_\_\_\_\_  
 Project No.: \_\_\_\_\_  
 S.I.S. No.: \_\_\_\_\_

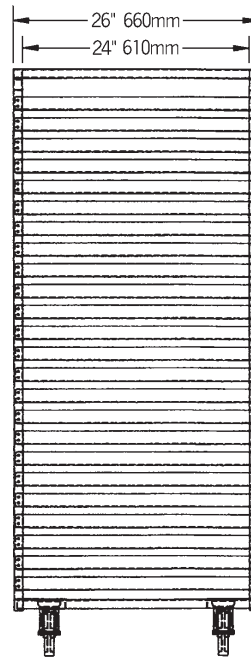
# Panco® Roll-In Refrigerator Racks—Stainless Steel Models



TOP VIEW



FRONT VIEW



SIDE VIEW

(model# OURR-1824-2-SR shown)

model #	overall dimensions						weight		sliding space		tray size	tray capacity
	width in.	width mm	depth in.	depth mm	height in.	height mm			in.	mm		
<b>OURR-1824-2-SR</b>	20 1/2"	521	26"	660	63 3/8"	1610	187	84.8	2 1/4"	57	18" x 26"	24
<b>OURR-1818-3-SR</b>	20 1/2"	521	26"	660	63 3/8"	1610	151	68.5	3"	76	18" x 26"	18
<b>OURR-1811-5-SR</b>	20 1/2"	521	26"	660	63 3/8"	1610	121	54.9	5"	127	18" x 26"	11
<b>OURR-2036-3-SR</b>	23"	584	26"	660	64"	1626	154	69.9	3"	76	12" x 20" *	36 *
<b>UARR-64-SR**</b>	20 1/2"	521	26"	660	64"	1626	160	72.6	2 1/2"	64	UAS***	

\* Two 12" x 20" (305 x 508mm) trays per set of tray slides.

\*\* Model #UARR-64-SR supplied with standard extruded aluminum universal slides.

\*\*\* Model #UARR-64-SR comes with 11 Universal Angle Slides. Each set holds two 12" x 20" (305 x 508mm) pans, one 18" x 26" (457 x 660mm) tray, plus one 15" x 20" (381 x 508mm) tray or one 20" x 20" (305 x 305mm) rack.

**EAGLE GROUP**  
 100 Industrial Boulevard, Clayton, DE 19938-8903 USA  
 Phone: 302-653-3000 • Fax: 302-653-2065  
 www.eaglegrp.com

Foodservice Division: Phone 800-441-8440  
 MHC/Retail Display Divisions: Phone 800-637-5100

Printed in U.S.A.  
 ©2008 by Eagle Group  
 Rev. 08/08

Spec sheets available for viewing, printing or downloading from our online literature library at [www.eaglegrp.com](http://www.eaglegrp.com)

Although every attempt has been made to ensure the accuracy of the information provided, we cannot be held responsible for typographical or printing errors. Information and specifications are subject to change without notice. Please confirm at time of order.